



## SZINTTÁVADÓ ECL SOROZAT

Modell ECL 8439



ECL 8439.XX  
Szintjeladó ECL 4-20 mA

- Pontosság 0,3-0,5% FS típus.
- Viskózus közeghez
- Mérési tartomány 0 ... 0,1 és 0 ... 2 bar között



### TERMÉKLEÍRÁS

### MŰSZAKI ADATOK

<b>Bemelegedési idő</b>	100 ms
<b>Csomagolóanyag</b>	FKM
<b>Elektromágneses összeférhetőség/zavarvédelem</b>	EN/IEC61000-6-3, 61000-6-2
<b>Elektromos csatlakozás</b>	PUR / Radox / PE kabel med udluftning
<b>Hosszú idejű stabilitás, jellemző</b>	<±0,2% FS
<b>IP-osztály</b>	IP68
<b>Jellemző NLH (a BSL-től 0-ig)</b>	±0,2 / 0,3% FS
<b>Jellemző pontosság +25 °C-on</b>	±0,3 / 0,5% FS
<b>Jellemző tartózkodási idő</b>	1 ms (10...90% FS)
<b>Kimenet</b>	4-20 mA
<b>Közeghőmérséklet eddig:</b>	70 °C
<b>Közeghőmérséklet ettől:</b>	-10 °C
<b>Mechanikus támaszték</b>	50 g / 8 ms
<b>Tápfeszültség</b>	9-32 VDC
<b>Test anyaga</b>	Rozsdamentes acél 316L
<b>Type level meter</b>	Electronic

Tömeg

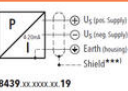
200 g

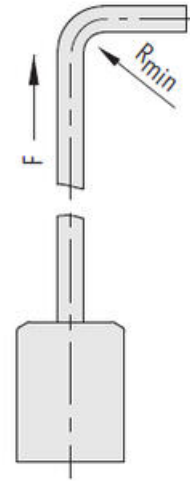
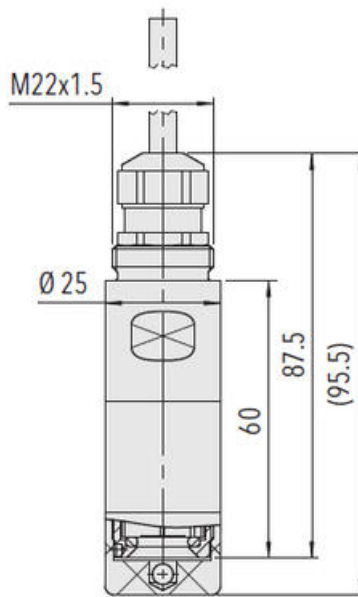
Vibráció, rezonancia

6 g (25...2000Hz)

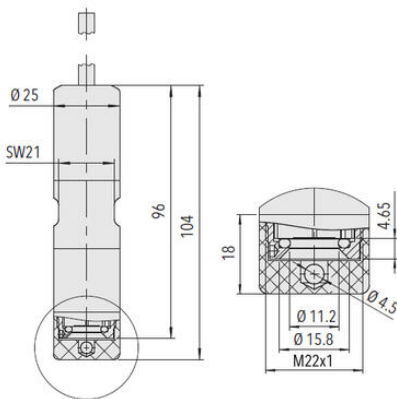
Üzemi hőmérséklet

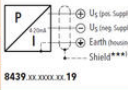
-10...70°C

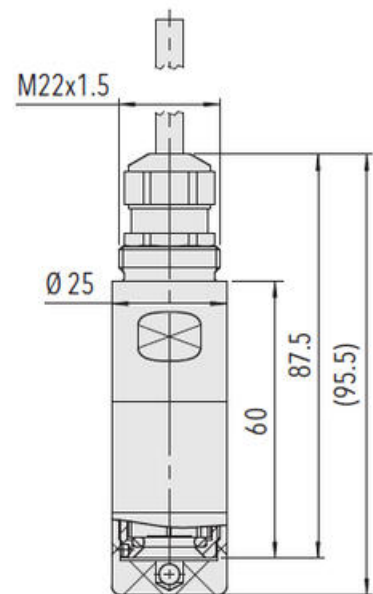
Output signal	Protection / electrical connection		
	IP68 (25 bar; 250m)	IP68 (25 bar; 250m)	IP68 (25 bar; 250m)
 <p>8439 xx.xxxx.xx.19</p>	Cable PUR Ø 6 mm (Std. 22mm) <b>2X</b>	Cable Radox Ø 6 mm (Std. 22mm) <b>3X</b>	Cable PE Ø 6 mm (Std. 22mm) <b>4X</b>
	Shield Venting	Shield Venting	Shield Venting
	white brown yellow (green = not connected) (red = not connected)	white brown yellow (green = not connected) (red = not connected)	white brown yellow (green = not connected) (red = not connected)
	40 mm	60 mm	30 mm

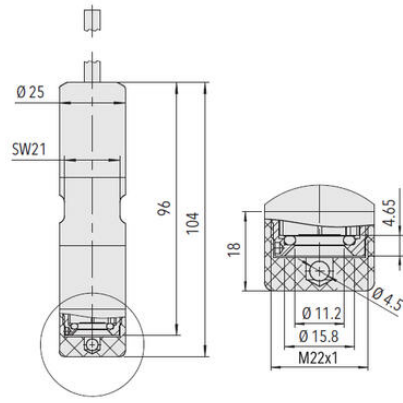
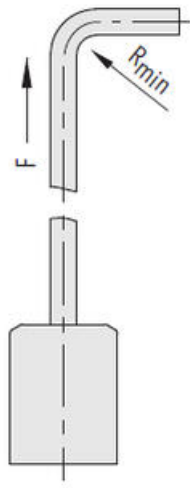


$F = \text{max. } 12 \text{ kg (120 N)}$



Output signal	Protection / electrical connection		
	IP68 (25 bar; 250m)	IP68 (25 bar; 250m)	IP68 (25 bar; 250m)
 <p>8439 xx.xxxx.xx.19</p>	Cable PUR Ø 6 mm (Std. 22mm) <b>2X</b>	Cable Radox Ø 6 mm (Std. 22mm) <b>3X</b>	Cable PE Ø 6 mm (Std. 22mm) <b>4X</b>
	Shield Venting	Shield Venting	Shield Venting
	white brown yellow (green = not connected) (red = not connected)	white brown yellow (green = not connected) (red = not connected)	white brown yellow (green = not connected) (red = not connected)
	40 mm	60 mm	30 mm





F = max. 12 kg (120 N)