



EJ DK ÁRAMLÁSMÉRŐ - 3750

MT3750C Típus

MT3750C

- Rozsdamentes acél test
- 100 l / h-ig
- Magas hőmérséklet és magas nyomás
- Hőmérséklet 204 ° C-ig
- Nyomás 276 bar-ig

BROOKS
INSTRUMENT



TERMÉKLEÍRÁS

A Brooks® Ar-Mite MT3750C egy megbízható, alacsony áramlású fémcső-áramlásmérő, ahol a közeggel érintkező részek 316L rozsdamentes acélból készülnek.

A mágnesesen összekapcsolt indikátor nagyon megbízható módszert kínál a kijelzéshez. Ez a modell praktikus és gazdaságos választás az alacsony áramláshoz magas nyomáson/magas hőmérsékleten, és különösen agresszív folyadékok kezelésekor. A 4–20 mA kimeneti jelű távadó opciója, be- vagy kimeneti túszelep, áramlásszabályozó vagy riasztó is elérhető.

Megrendelésével és bővebb felvilágosításért forduljon Bjarne Österberghez a bjarne.osterberg@oemautomatic.se e-mail címen vagy a +46 075 242 4251-es telefonszámon.

Model: 3750C	
AIR-MITE ARMORED PURGE FLOWMETER	
BASIC MODEL NUMBER	ARMORED PURGE FLOWMETER
3750C	51 MM
MATERIAL SPECIFICATION	
1	316L STN. STL. & CRN. CERTIFICATION
2	316L STN. STL. CRN. CERTIFICATION & CERTIFIED MATERIAL TO EN 2.2
3	316L STN. STL. CRN. CERTIFICATION & CERTIFIED MATERIAL TO EN 3.1
4	316L STN. STL. CRN. CERTIFICATION & SECTION X WELDING
5	316L STN. STL. CRN. CERTIFICATION & CERTIFIED MATERIAL TO EN 2.2 / SECTION X WELDING
6	316L STN. STL. CRN. CERTIFICATION & CERTIFIED MATERIAL TO EN 3.1 / SECTION X WELDING
7	316L STN. STL.
8	316L STN. STL. CERTIFIED MATERIAL TO EN 2.2
9	316L STN. STL. CERTIFIED MATERIAL TO EN 3.1
10	316L STN. STL. WITH SECTION X WELDING
11	316L STN. STL. CERTIFIED MATERIAL TO EN 2.2 / SECTION X WELDING
12	316L STN. STL. CERTIFIED MATERIAL TO EN 3.1 / SECTION X WELDING
13	316L STN. STL.
METER SIZE	
0	SIZE 0
1	SIZE 1
2	SIZE 2
3	SIZE 3
4	SIZE 4
5	SIZE 5
6	SIZE 6
CONSTRUCTION	
A	STANDARD DESIGN
B	STANDARD DESIGN
C	STANDARD DESIGN
D	STANDARD DESIGN
E	STANDARD DESIGN
F	STANDARD DESIGN
G	STANDARD DESIGN
H	STANDARD DESIGN
I	STANDARD DESIGN
J	STANDARD DESIGN
K	STANDARD DESIGN
L	STANDARD DESIGN
M	STANDARD DESIGN
N	STANDARD DESIGN
CONNECTION SIZE AND TYPE	
1	1/4" NPT (F) - INTERNAL
2	1/4" TUBE COMPRESSION - WITH ADAPTER
3	3/8" TUBE COMPRESSION - WITH ADAPTER
4	1/2" NPT (F) - WITH ADAPTER
5	3/4" NPT (F) - WITH ADAPTER
6	1" NPT (F) - WITH ADAPTER
A	1/2" ANG 150# WF FLANGE - VERTICAL ONLY
B	1/2" ANG 300# WF FLANGE - VERTICAL ONLY
C	1/2" ANG 600# WF FLANGE - VERTICAL ONLY
D	3/4" ANG 150# WF FLANGE - VERTICAL ONLY
E	3/4" ANG 300# WF FLANGE - VERTICAL ONLY
F	3/4" ANG 600# WF FLANGE - VERTICAL ONLY
G	1" ANG 150# WF FLANGE - VERTICAL ONLY
H	1" ANG 300# WF FLANGE - VERTICAL ONLY
I	1" ANG 600# WF FLANGE - VERTICAL ONLY
J	1 1/2" ANG 150# WF FLANGE - VERTICAL ONLY
K	1 1/2" ANG 300# WF FLANGE - VERTICAL ONLY
L	1 1/2" ANG 600# WF FLANGE - VERTICAL ONLY
M	2" ANG 150# WF FLANGE - VERTICAL ONLY
N	2" ANG 300# WF FLANGE - VERTICAL ONLY
CONNECTION ORIENTATION	
1	HORIZONTAL INLET AND OUTLET (THREADED CONNECTIONS ONLY)
2	VERTICAL INLET & OUTLET (ANGLED CONNECTIONS ONLY)
VALVE CONFIGURATION	
A	NO VALVE (STANDARD) FITTING WITH FLG
B	LOW FLOW VALVE ON INLET TYPICAL FOR SIZE 0, 1, 2
C	MEDIUM FLOW VALVE ON INLET TYPICAL FOR SIZE 3, 4, 5
D	HIGH FLOW VALVE ON INLET TYPICAL FOR SIZE 5, 6, 8
E	NO VALVE CAPABILITY WELDED - HIGH PRESSURE ONLY
A	NBS VALVE - SIZE 0 ON INLET TYPICAL FOR SIZE 0, 1
L	NBS VALVE - SIZE 1 ON INLET TYPICAL FOR SIZE 2
M	NBS VALVE - SIZE 2 ON INLET TYPICAL FOR SIZE 3
N	NBS VALVE - SIZE 3 ON INLET TYPICAL FOR SIZE 4, 5

1	316L STN. STL. CRN. CERTIFICATION
2	316L STN. STL. CRN. CERTIFICATION & CERTIFIED MATERIAL TO EN 2.2
3	316L STN. STL. CRN. CERTIFICATION & CERTIFIED MATERIAL TO EN 3.1
4	316L STN. STL. CRN. CERTIFICATION & SECTION X WELDING
5	316L STN. STL. CRN. CERTIFICATION & CERTIFIED MATERIAL TO EN 2.2 / SECTION X WELDING
6	316L STN. STL. CRN. CERTIFICATION & CERTIFIED MATERIAL TO EN 3.1 / SECTION X WELDING
7	316L STN. STL.
8	316L STN. STL. CERTIFIED MATERIAL TO EN 2.2
9	316L STN. STL. CERTIFIED MATERIAL TO EN 3.1
10	316L STN. STL. WITH SECTION X WELDING
11	316L STN. STL. CERTIFIED MATERIAL TO EN 2.2 / SECTION X WELDING
12	316L STN. STL. CERTIFIED MATERIAL TO EN 3.1 / SECTION X WELDING
13	316L STN. STL.
METER SIZE	
0	SIZE 0
1	SIZE 1
2	SIZE 2
3	SIZE 3
4	SIZE 4
5	SIZE 5
6	SIZE 6
CONSTRUCTION	
A	STANDARD DESIGN
B	STANDARD DESIGN
C	STANDARD DESIGN
D	STANDARD DESIGN
E	STANDARD DESIGN
F	STANDARD DESIGN
G	STANDARD DESIGN
H	STANDARD DESIGN
I	STANDARD DESIGN
J	STANDARD DESIGN
K	STANDARD DESIGN
L	STANDARD DESIGN
M	STANDARD DESIGN
N	STANDARD DESIGN
CONNECTION SIZE AND TYPE	
1	1/4" NPT (F) - INTERNAL
2	1/4" TUBE COMPRESSION - WITH ADAPTER
3	3/8" TUBE COMPRESSION - WITH ADAPTER
4	1/2" NPT (F) - WITH ADAPTER
5	3/4" NPT (F) - WITH ADAPTER
6	1" NPT (F) - WITH ADAPTER
A	1/2" ANG 150# WF FLANGE - VERTICAL ONLY
B	1/2" ANG 300# WF FLANGE - VERTICAL ONLY
C	1/2" ANG 600# WF FLANGE - VERTICAL ONLY
D	3/4" ANG 150# WF FLANGE - VERTICAL ONLY
E	3/4" ANG 300# WF FLANGE - VERTICAL ONLY
F	3/4" ANG 600# WF FLANGE - VERTICAL ONLY
G	1" ANG 150# WF FLANGE - VERTICAL ONLY
H	1" ANG 300# WF FLANGE - VERTICAL ONLY
I	1" ANG 600# WF FLANGE - VERTICAL ONLY
J	1 1/2" ANG 150# WF FLANGE - VERTICAL ONLY
K	1 1/2" ANG 300# WF FLANGE - VERTICAL ONLY
L	1 1/2" ANG 600# WF FLANGE - VERTICAL ONLY
M	2" ANG 150# WF FLANGE - VERTICAL ONLY
N	2" ANG 300# WF FLANGE - VERTICAL ONLY
CONNECTION ORIENTATION	
1	HORIZONTAL INLET AND OUTLET (THREADED CONNECTIONS ONLY)
2	VERTICAL INLET & OUTLET (ANGLED CONNECTIONS ONLY)
VALVE CONFIGURATION	
A	NO VALVE (STANDARD) FITTING WITH FLG
B	LOW FLOW VALVE ON INLET TYPICAL FOR SIZE 0, 1, 2
C	MEDIUM FLOW VALVE ON INLET TYPICAL FOR SIZE 3, 4, 5
D	HIGH FLOW VALVE ON INLET TYPICAL FOR SIZE 5, 6, 8
E	NO VALVE CAPABILITY WELDED - HIGH PRESSURE ONLY
A	NBS VALVE - SIZE 0 ON INLET TYPICAL FOR SIZE 0, 1
L	NBS VALVE - SIZE 1 ON INLET TYPICAL FOR SIZE 2
M	NBS VALVE - SIZE 2 ON INLET TYPICAL FOR SIZE 3
N	NBS VALVE - SIZE 3 ON INLET TYPICAL FOR SIZE 4, 5

MŰSZAKI ADATOK

Csatlakozás típusa

NPT, BSP, kapcsos összekötés, 1/4"-1" karimák

I/O portok – kimenet

4-20 mA

IP-osztály

IP64, IP66, IP67

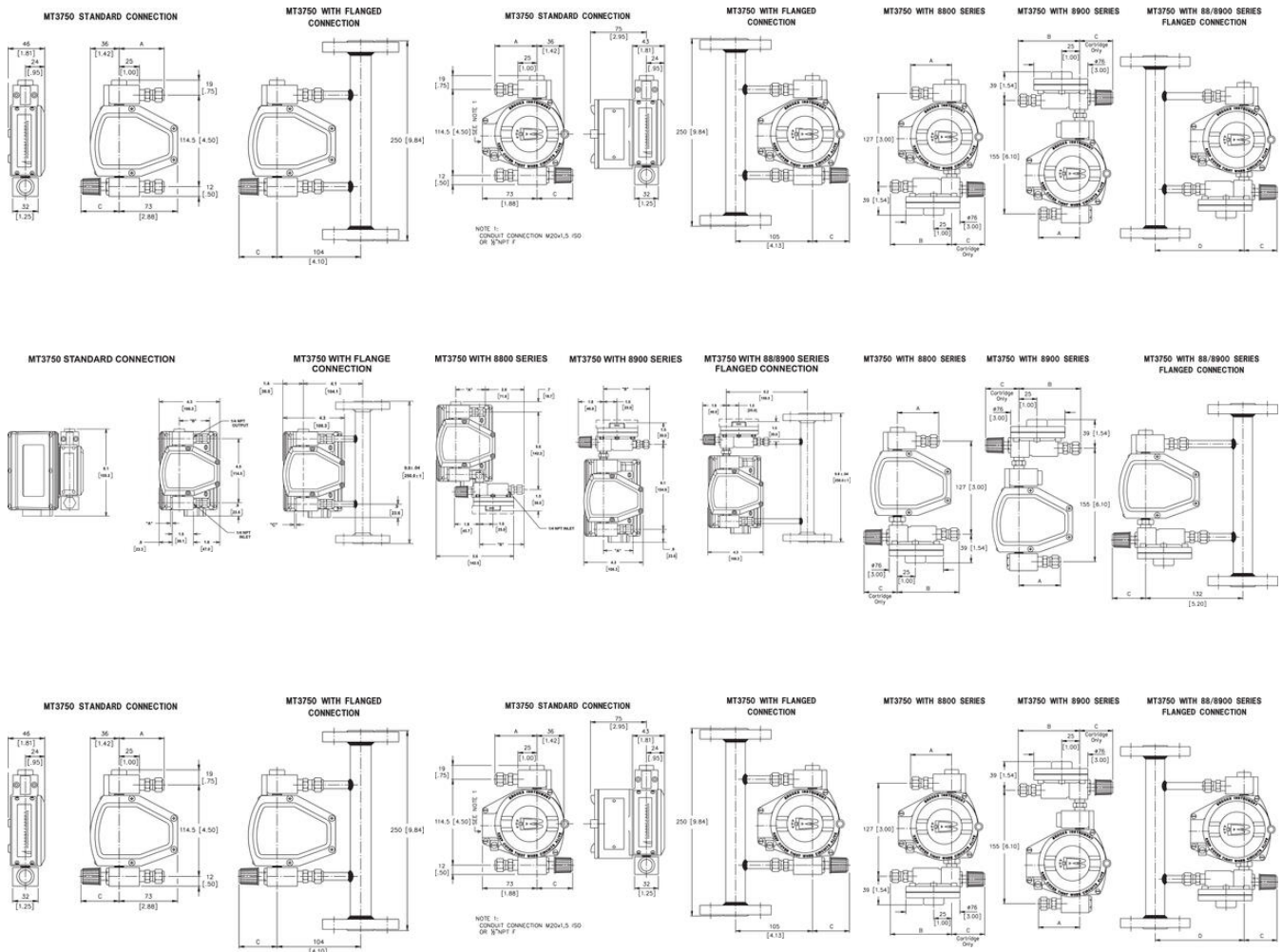
Jóváhagyások

ATEX, CE, CSA, IECEx, PED

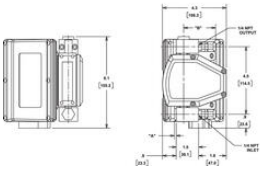
Közeghőmérséklet eddig:

204 °C

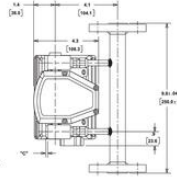
Közeghőmérséklet ettől:	-50 °C
Max. tápfeszültség, DC	24 V DC
Max. üzemi hőmérséklet	65 °C
Max. üzemi nyomás	100 bar
Megismételhetőség	1% F.S.
Min. üzemi hőmérséklet	-29 °C
Nyomástartomány max. értéke	276 bar
O-gyűrű anyaga	Buna, Kalrez, PTFE
Pontosság	±5% F.S. opció 3% F.S.
Riasztások	Riasztáskapcsoló
Skála hossza	52 mm
Szabályozási tartomány	1:10
Tápfeszültség	24 V
Test anyaga	Rozsdamentes acél 316L, Titán
Úszó anyaga	Rozsdamentes acél 316L
Vízzel érintkező alkatrészek anyaga	Rozsdamentes acél 316L, Titán



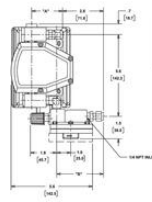
MT3750 STANDARD CONNECTION



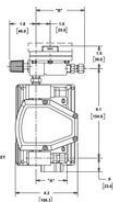
MT3750 WITH FLANGE CONNECTION



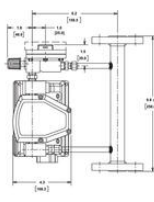
MT3750 WITH 8800 SERIES



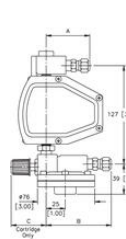
MT3750 WITH 8900 SERIES



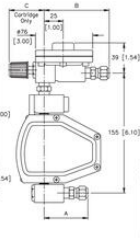
MT3750 WITH 888000 SERIES FLANGED CONNECTION



MT3750 WITH 8800 SERIES



MT3750 WITH 8900 SERIES



MT3750 WITH 88/8900 SERIES FLANGED CONNECTION

