



MHM5 ÉRZÉKELŐ

MHM510-PROF-001

- Felbontás max. 25 bites; 13 bit a felbontáshoz és 12 bites a fordulathoz
- CANopen, DeviceNet, Ethercat, Ethernet / IP, Interbus, Modbus, Párhuzamos, Profibus, Profinet
- IP64, opcionális IP66



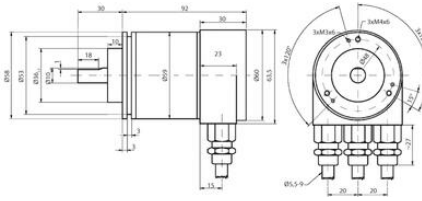
TERMÉKLEÍRÁS

MŰSZAKI ADATOK

Befoglalási átmérő	58 mm
Csatlakozás	Csavaros csatlakozás
Érzékelő típusa	Abszolút
Felbontás	Max. 13 bit resoluutiolle ja 12 bit kierroksille
IP-osztály	IP64
Kilépés	Profibus
Max. sebesség	6000 rpm
Max. tápfeszültség, DC	30 V DC
Max. üzemi hőmérséklet	85 °C
Min. tápfeszültség, DC	10 V DC
Min. üzemi hőmérséklet	-40 °C
Tengelyátmérő	10 mm
Verzió	Többmenetes

PROGRAMMABLE PARAMETERS

Operating Parameters	This parameter determines the counting direction, in which the output code increases or decreases. As an important operating parameter the code sequence (complement) can be programmed
Resolution per turn "Max range"	Value between 1 and 8192 can be programmed
Total resolution "Max range"	This parameter is used to program the desired number of measuring units over the total measuring range. This value may not exceed the total resolution of the absolute rotary encoder.
Preset Value	The preset value is the desired position value, which should be reached at a certain physical position of the shaft
Limit Switch, Min. and Max	Two position values can be programmed as limit switches. By reaching these values one bit of the 32 bit process value is set to high level
Cam	One free programmable cam can be set in the total measuring range



PROGRAMMABLE PARAMETERS

Operating Parameters	This parameter determines the counting direction, in which the output code increases or decreases. As an important operating parameter the code sequence (complement) can be programmed
Resolution per turn "Max range"	Value between 1 and 8192 can be programmed
Total resolution "Max range"	This parameter is used to program the desired number of measuring units over the total measuring range. This value may not exceed the total resolution of the absolute rotary encoder.
Preset Value	The preset value is the desired position value, which should be reached at a certain physical position of the shaft
Limit Switch, Min. and Max	Two position values can be programmed as limit switches. By reaching these values one bit of the 32 bit process value is set to high level
Cam	One free programmable cam can be set in the total measuring range

