



GHU9 INKREMENTÁLIS ÉRZÉKELŐ

GHU9-INKREMENTTIANTURI

- Felbontás max. 10 000 P / K
- IP 65, opcionálisan IP67
- 2 m kábellel vagy csatlakozóval
- Opcionális hajtómű



TERMÉKLEÍRÁS

MŰSZAKI ADATOK

Befoglalási átmérő	90 mm
Csatlakozás	Kábel, M23 érintkező
Érzékelő típusa	Differenciális
IP-osztály	IP66, IP67
Kilépés	Push/Pull
Max. impulzusszám	10000
Max. sebesség	6000 rpm
Max. tápfeszültség, DC	30 V DC
Max. üzemi hőmérséklet	100 °C
Min. tápfeszültség, DC	5 V DC
Min. üzemi hőmérséklet	-40 °C
Tengelyátmérő	30 mm

ORDERING REFERENCE (Contact the factory for special versions ex: overvoltage switch, electronics, special flanges, connections...)

GRIP	Shaft Ø	Available electronic	Output signal	Resolution	Connection	Connection orientation
GRIP Cover: dnc Body: stu	30: 30mm	2G2, 5G2, 5G5, 5GT, 5GH, 3G3	1: A..A./B./G./D. (A..A..A.gated)	10 000 max	G4: M23 12 pins CW	1: radial
GRIP Cover: dnc Body: stainless steel	32: 32mm	Supply 2: 5Vdc 5: 11 to 30Vdc 3: 15 to 30Vdc	Output stages G2: driver 5Vdc: 85402 G3: driver 12Vdc G5: push-out G4: push-out 11-30Vdc G6: push-out 11-30Vdc: transistorised G7: push-out 11-30Vdc: 150 mA	10 000 max	G4: M23 12 pins CCW G8: M23 12 pins CCW	1: radial
GRIP Cover and body: stainless steel	Ex: GRIPF	30 // 5	G5	1 // 5 000 //	GP	8050

Available resolutions: 1 2 3 4 5 6 7 8 9 10 12 13 14 15 16 17 18 19 20 21 24 25 26 28 29 30 32 35 36 39 40 43 45 46 48 50 54 56 58 60 63 64 66 67 70 72 74 75 76 80 84 86 88 89 90 91 94 96 100 107 110 120 122 125 127 128 130 132 138 140 147 150 157 159 160 168 169 170 172 174 180 188 191 196 200 201 205 220 225 234 240 241 242 243 246 248 249 254 255 256 258 259 265 266 275 283 285 295 300 305 314 315 318 320 330 340 350 360 367 375 378 380 381 386 390 397 400 405 410 424 425 438 443 450 471 480 489 495 500 510 513 514 540 550 565 580 600 623 625 628 630 633 635 650 660 700 720 746 750 752 754 800 810 840 860 880 891 900 940 950 1000 1024 1080 1100 1131 1200 1225 1250 1260 1290 1400 1414 1440 1500 1536 1570 1600 1620 1630 1750 1800 1885 2000 2048 2250 2400 2500 2640 3000 3456 3600 3680 3750 4000 4096 4300 4900 5000 7200 9000 10000

Sig A

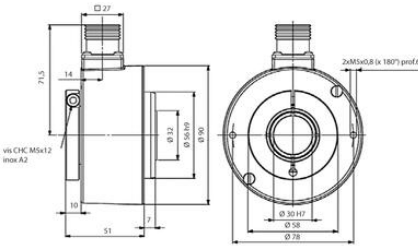
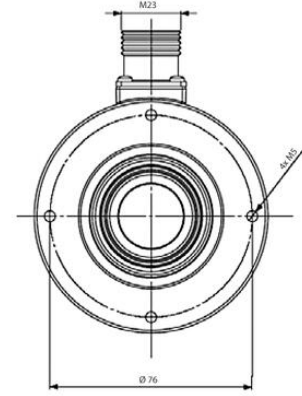
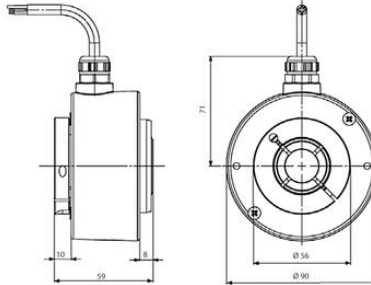
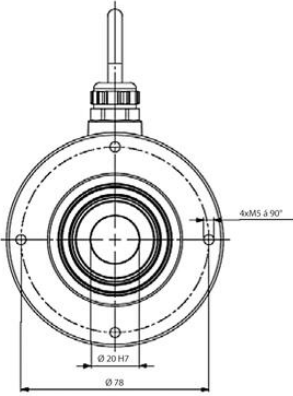
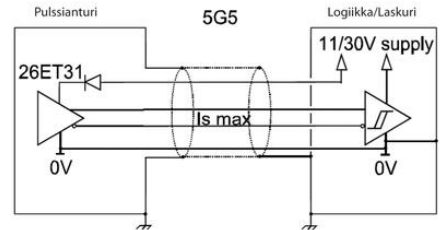
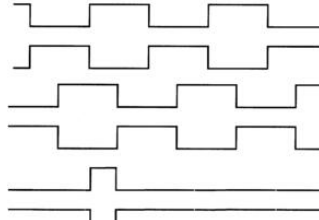
Sig \bar{A}

Sig B

Sig \bar{B}

Sig Z

Sig \bar{Z}



ORDERING REFERENCE (Contact the factory for special versions ex: overvoltage switch, electronics, special flanges, connections...)

GRIP	Shaft Ø	Available electronic	Output signal	Resolution	Connection	Connection orientation
GRIP Cover: dnc Body: stu	30: 30mm	2G2, 5G2, 5G5, 5GT, 5GH, 3G3	1: A..A./B./G./D. (A..A..A.gated)	10 000 max	G4: M23 12 pins CW	1: radial
GRIP Cover: dnc Body: stainless steel	32: 32mm	Supply 2: 5Vdc 5: 11 to 30Vdc 3: 15 to 30Vdc	Output stages G2: driver 5Vdc: 85402 G3: driver 12Vdc G5: push-out G4: push-out 11-30Vdc G6: push-out 11-30Vdc: transistorised G7: push-out 11-30Vdc: 150 mA	10 000 max	G4: M23 12 pins CCW G8: M23 12 pins CCW	1: radial
GRIP Cover and body: stainless steel	Ex: GRIPF	30 // 5	G5	1 // 5 000 //	GP	8050

Available resolutions: 1 2 3 4 5 6 7 8 9 10 12 13 14 15 16 17 18 19 20 21 24 25 26 28 29 30 32 35 36 39 40 43 45 46 48 50 54 56 58 60 63 64 66 67 70 72 74 75 76 80 84 86 88 89 90 91 94 96 100 107 110 120 122 125 127 128 130 132 138 140 147 150 157 159 160 168 169 170 172 174 180 188 191 196 200 201 205 220 225 234 240 241 242 243 246 248 249 254 255 256 258 259 265 266 275 283 285 295 300 305 314 315 318 320 330 340 350 360 367 375 378 380 381 386 390 397 400 405 410 424 425 438 443 450 471 480 489 495 500 510 513 514 540 550 565 580 600 623 625 628 630 633 635 650 660 700 720 746 750 752 754 800 810 840 860 880 891 900 940 950 1000 1024 1080 1100 1131 1200 1225 1250 1260 1290 1400 1414 1440 1500 1536 1570 1600 1620 1630 1750 1800 1885 2000 2048 2250 2400 2500 2640 3000 3456 3600 3680 3750 4000 4096 4300 4900 5000 7200 9000 10000

Sig A

Sig \bar{A}

Sig B

Sig \bar{B}

Sig Z

Sig \bar{Z}

